

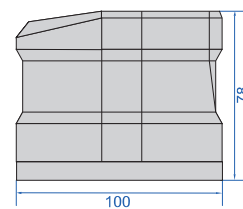
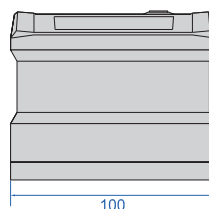
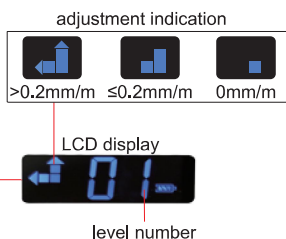
BUILT-IN
BLUETOOTH

BLUETOOTH DUAL-AXIS DIGITAL LEVELS

retractable handle



4954-1B

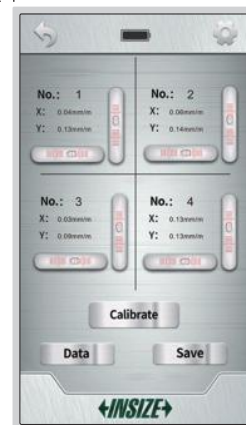


Unit: mm

- Measure the level of machine tools and other equipments
- Built-in bluetooth, transmission distance is 20 meters (under the condition of no obstruction and no electromagnetic interference)
- Can display one level, can also display multiple levels (up to 4 levels at the same time)
- Android and iPhone APP are included
- Unit: mm/m, °
- Automatic power off
- Power supply: 3xAAA batteries, for 15h continuous working
- Optional accessory: handheld display (Code 4954-DPE)

Code	Range	Resolution	Accuracy	Net weight	Remark
4954-1A	±0.5mm/m	0.01mm/m	±0.02mm	1.8kg	with handheld display
4954-1B	±0.5mm/m	0.01mm/m	±0.02mm	1.6kg	without handheld display

display multiple levels
(up to 4 levels at the same time)



data output

Android and iPhone APP

20m

20m

handheld display
(Code 4954-DPE, optional)

display one level
(display in X/Y axes simultaneously)

view/export the data

Y-axis anglong bubble

X-axis anglong bubble

leveling data